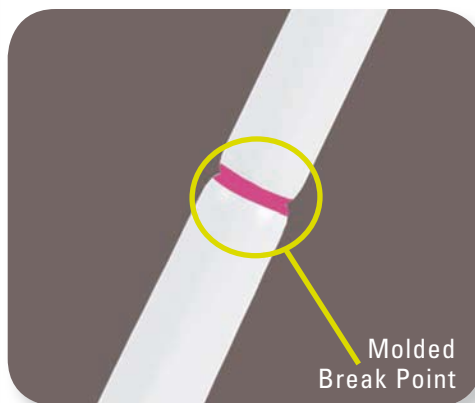


Virus, Chlamydia, Mycoplasma and Ureaplasma

- **One transport - multiple tests - no sample rejection**
 - Culture - all viruses, Chlamydia, Mycoplasma and Ureaplasma
 - Enzyme Immuno Assays (EIA)
 - PCR
 - Nucleic acid amplification assays including *Chlamydia trachomatis* and *Neisseria gonorrhoeae* (Ct/Ng).
- **Product stable at room temperature for 18 months**
- **Organism viability maintained at room temperature and on ice. Suitable also for long term freeze storage**
- **Copan flocced swabs increase sample release**
UTM is supplied with unique flocced swabs, which increase sample release and sensitivity in tissue culture or assays.
- **Choice of tube size, medium fill volume and product format**
Variety of patient specimen collection kits available, comprising of tubes of media and swabs or bulk packs of media tubes only.
- **Internal conical shaped tube**
Tubes stand upright on the bench without the need for tube racks.
- **Glass beads in each tube**
Assist the release of sample from the swab and mixing prior to analysis, when used with a vortex mixer.

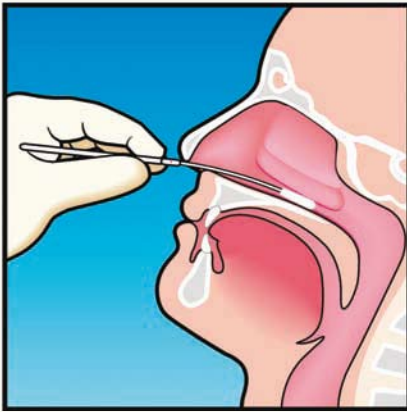




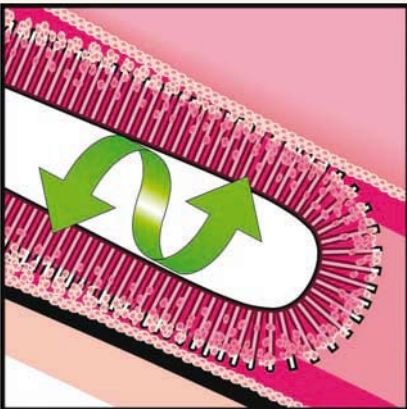
How To Use



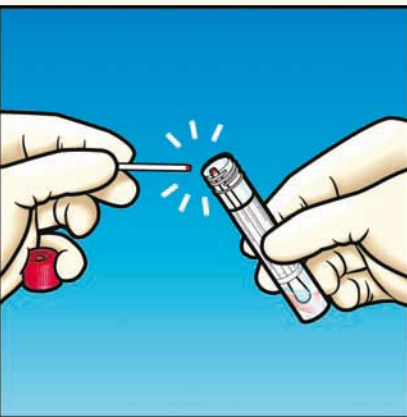
Nasopharyngeal Sample Collection



Step 1: Insert the FLOQSwab™ into the nasal passage until a slight resistance is met.



Step 2: Rotate the swab two to three times and hold the swab in place for 5 seconds to ensure maximum absorbency. Strong capillary hydraulics between the strands of nylon maximizes liquid sample collection.



Step 3: Put the swab in the UTM transport medium and break the shaft at the painted breakpoint. Sample elutes automatically and rapidly because it is held very close to the surface in a totally open structure. This does not hinder the flow dynamics so the entire sample is released.



Cat. No	Description- Medium without Swabs	Packaging
330C	16 x100 mm Screw Cap Tube, 3ml of UTM Transport and Preservation Medium	50 pcs. per box 6 x 50 per case
350C	12 x 80 mm Screw Cap Tube, 1ml of UTM Transport and Preservation Medium	50 pcs. per box 6 x 50 per case
Cat. No	Description- Medium with Swabs	Packaging
346C	16 x 100mm Screw Cap Tube Containing 3ml of UTM Transport and Preservation Medium, 1 Regular Flocked Swab	50 pcs. per box 6 x 50 per case
307C	16 x 100mm Screw Cap Tube Containing 3ml of UTM Transport and Preservation Medium, 1 Mini Tip Flocked Swab	50 pcs. per box 6 x 50 per case
305C	16 X 100mm Screw Cap Tube Containing 3ml of UTM Transport and Preservation Medium, 1 Nasopharyngeal Flocked Swab	50 pcs. per box 6 x 50 per case
359C	12 x 80mm Screw Cap Tube Containing 1ml of UTM Transport and Preservation Medium, 1 Regular Flocked Swab	50 pcs. per box 6 x 50 per case
361C	12 x 80mm Screw Cap Tube Containing 1ml of UTM Transport and Preservation Medium, 1 Mini Tip Flocked Swab	50 pcs. per box 6 x 50 per case
360C	12x80mm Screw Cap Tube Containing 1ml of UTM Transport and Preservation Medium, 1 Nasopharyngeal Flocked Swab	50 pcs. per box 6 x 50 per case